

ADMINISTRATIVE ORGANIZATION PLAN

The legal authority of the Board is to be transmitted through the Superintendent along specific paths from person to person as shown by organizational charts for the district. The lines of authority in the attached chart represent direction of authority and responsibility. All such charts shall be submitted to the Board for approval and shall be regarded as visual representations of policy.

ADOPTED: August 25, 1980

REVISED: February 28, 2000
March 18, 2002
May 9, 2016

CROSS REF.: CC-E – Organizational Chart

REVIEW DATE: May 9, 2016

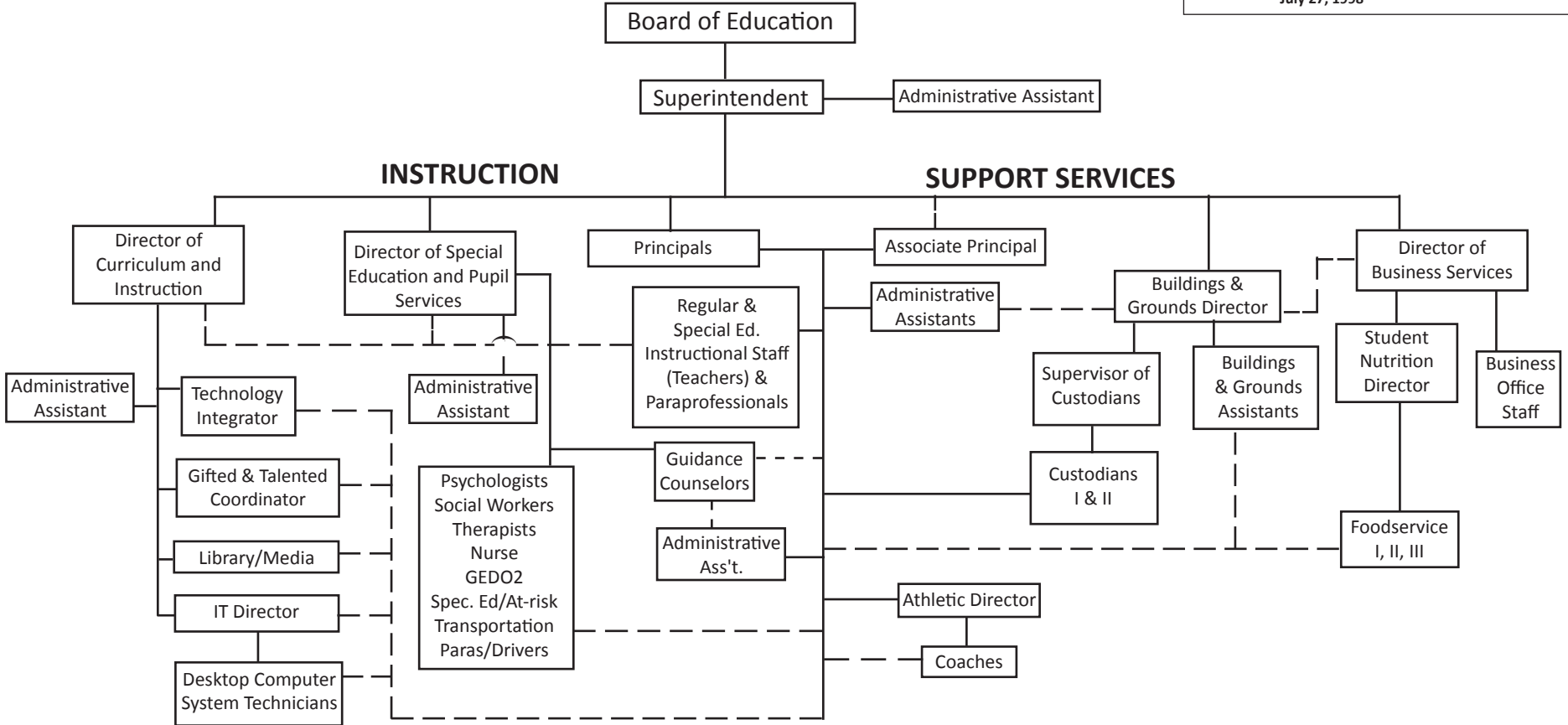
SCHOOL DISTRICT OF JEFFERSON

ORGANIZATIONAL CHART

Direct Responsibility
 Indirect Responsibility

Board of Education Policy Reference Code: CC-E

Adopted: August 25, 1980 February 28, 2000
 Revised: October 22, 1984 March 18, 2002
 July 29, 1985 October 23, 2006
 January 28, 1991 September 14, 2009
 June 27, 1994 May 9, 2016
 January 26, 1998 May 22, 2017
 July 27, 1998



*During summer vacation, the Supervisor of Custodians, in cooperation with the building principals, will direct and supervise the cleaning activities of all Custodians I and II. In addition, the Buildings and Grounds Director, in cooperation with the building principals, will direct and supervise maintenance activities of all Buildings & Grounds Assistants and grounds workers.